



TEKTELIC Communications Inc.  
7657 10th Street NE Calgary, Alberta  
Canada, T2E 8X2

---

# LOCUS END USER MANUAL

## USER MANUAL

---

<b>Document Type:</b>	User Manual
<b>Document Issue:</b>	1.1
<b>Document Status:</b>	Released
<b>Product Name:</b>	Locus
<b>Issue Date:</b>	July 07, 2021

---

### **PROPRIETARY:**

The information contained in this document is the property of TEKTELIC Communications Inc. Except as specifically authorized in writing by TEKTELIC, the holder of this document shall keep all information contained herein confidential, and shall protect the same in whole or in part from disclosure to all third parties.

© 2018 TEKTELIC Communications Inc., all rights reserved.

All products, names, and services are trademarks and registered trademarks of their respective companies.

**TEKTELIC Communications Inc.**  
7657 10<sup>th</sup> Street NE  
Calgary, AB, Canada T2E 8X2  
Phone: (403) 338-6900

## Document Revision

Revision	Issue Date	Status	Editor	Comments
1.0	May 25, 2021	Release	Daria Levchuk	Initial release.
1.1	July 07, 2021	Release	Daria Levchuk	Replaced the link to the application. Changed screenshots.

## Document Approval

Approver	Date	Status
Kevin Schluff	25 May 2021	Released
Yaroslav Gerasimov	07 July 2021	Released

## Table of Contents

1	Introduction .....	5
2	End User.....	6
	<b>2.1 End User view .....</b>	<b>6</b>
	<b>2.2 End User main tasks .....</b>	<b>6</b>
	<b>2.3 Finding Equipment by Browsing .....</b>	<b>6</b>
	<b>2.4 Searching for Equipment.....</b>	<b>8</b>
	<b>2.4 Setting User Preferences .....</b>	<b>8</b>

## 1 Introduction

The purpose of this document is to describe the use of Tektelic's Locus Application as an End User. It describes the steps involved in performing the main tasks for this role.

To use the application, access the link <https://tektelic-rtls.run.tago.io> and log in as an End User.

## 2 End User

The End User role accesses the system mainly for the purpose of finding equipment. The end user cannot modify any of the configuration, such as: devices, equipment, buildings, floors, rooms, beacons or alerts.

### 2.1 End User view

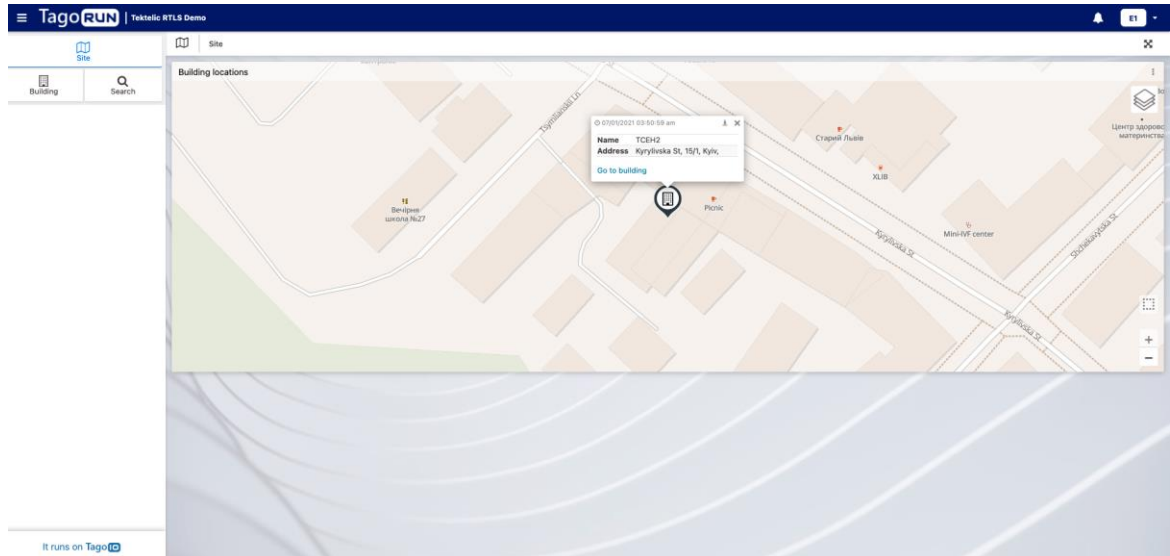


Figure 1: End User first view

### 2.2 End User main tasks

- Browsing for equipment
- Searching for equipment
- Setting user preferences

### 2.3 Finding Equipment by Browsing

On the first page the End User will be able to see all building locations depending on the User group. Buildings will be shown as a pin on the map, by clicking on it, an infobox including name, address and a link leading to that specific building will be shown.

By clicking on the “Go to building” link on a building pin or the “Building” button on the sidebar, the building view will be shown as seen below.

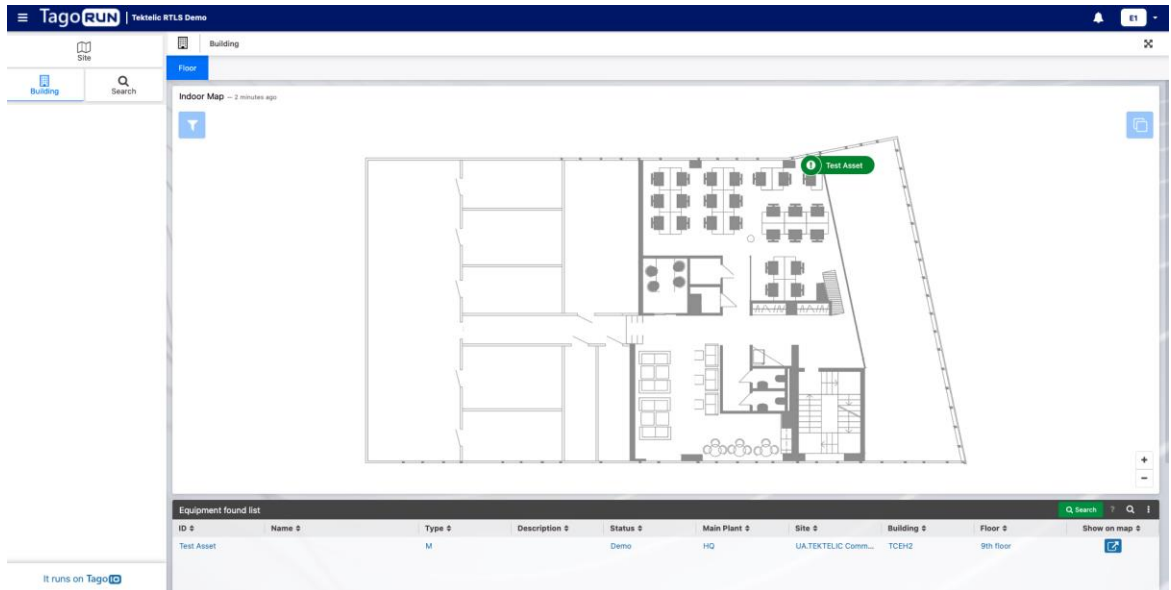


Figure 2: Building view

A floor map with equipment tracking shown with equipment location icons displayed. Note that equipment will only be shown on the map once the paired device first sends location data. Clicking on the equipment icon displays the equipment’s information such as Equipment name Demo, ID, type, and a link to the device movement history.

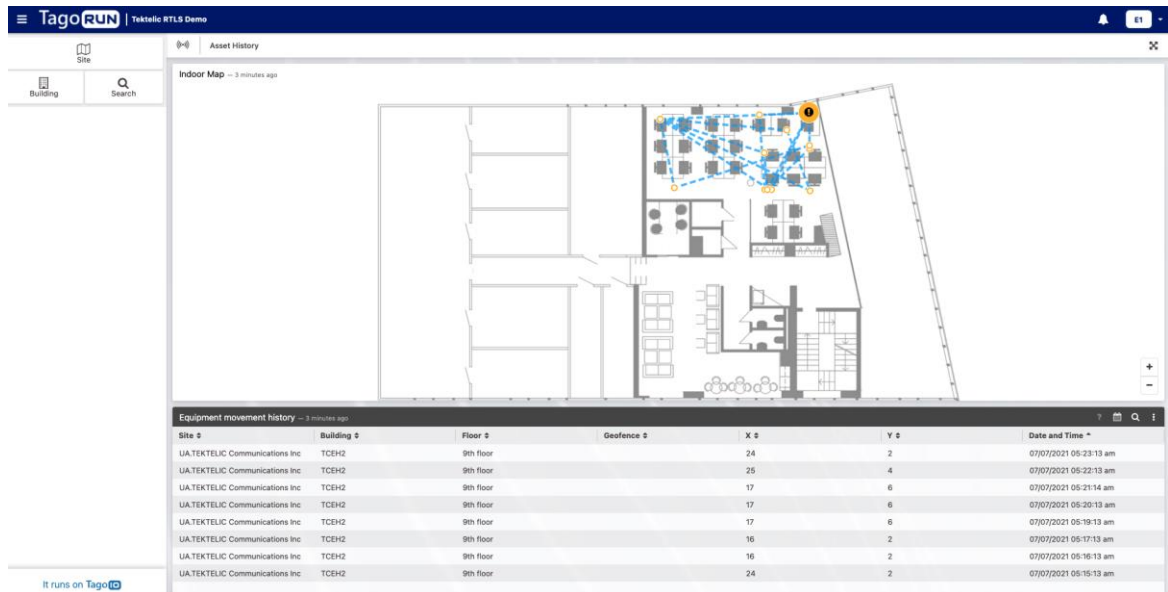


Figure 3: Movement history

It is possible to browse for a certain piece of equipment by selecting each building and floor within the building. The floor is selected using the layer icon the upper-right side.

By using the filter in the upper-left, it is possible to narrow the view by equipment type or specific ID.

## 2.4 Searching for Equipment

There are two ways to search for equipment. The first is through the “Equipment found list” widget in the building dashboard. Click the “Search” button to set the filter and initiate a search. This will search for the filtered equipment within the selected building.

The second approach is to perform a global search using the Search button on the left-hand navigation pane. The mechanism for setting the filter and initiating a search is the same, but results will be shown for the entire site. The global search dashboard is shown below.

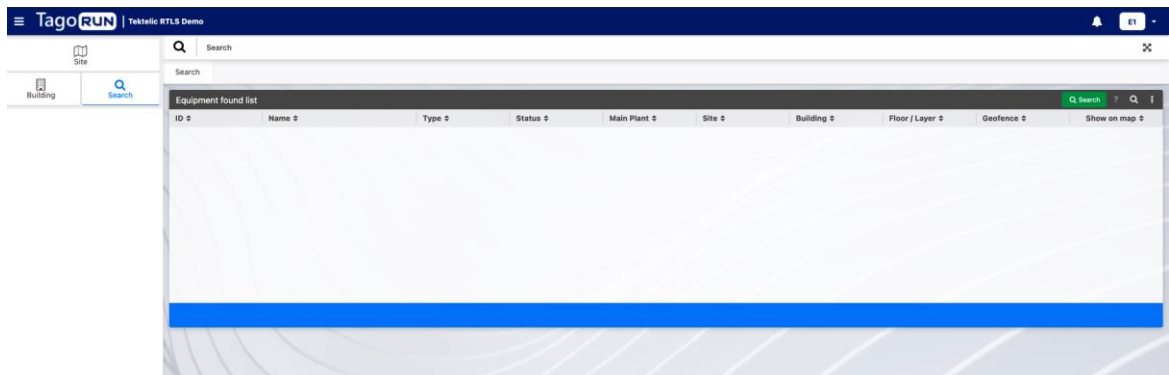


Figure 4: Global search dashboard

## 2.4 Setting User Preferences

User specific preferences may be set for each account. These preferences are accessed by clicking the user initials at the top-right corner of the screen, then selecting “My account”. Choosing the “Visualization Preferences” tab allows configuration of language, date format, time format and decimal separator, as shown below.



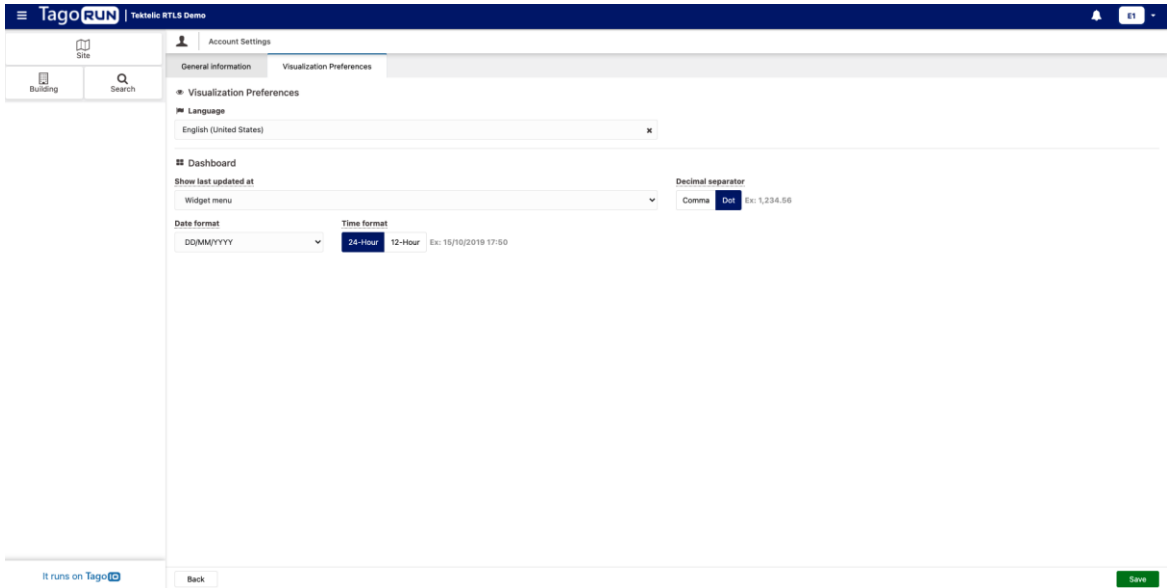


Figure 5: User Preferences