



TEKTELIC
communications
— IoT for life —

Cellular Configuration - Kona Micro & Kona Macro



Introduction

- » Reference guide to configure Cellular Interface on Kona Micro and Macro gateways
- » Prerequisites
- » High-level procedure
 - » Inserting SIM Card
 - » Set APN for Cellular Interface
 - » Power Cycle Gateway

Prerequisites

- » 3FF - Micro SIM Card
- » SIM card insertion tool (Tweezers)
- » Kona Micro and/or Kona Macro Gateway with accessories
- » Account on TEKTELIC Network Server or OAM Server
 - » If you do not have an account on the Network Server or OAM Server, please contact the support team at <https://support.tektelic.com>

Inserting SIM Card for **KONA Micro**



Figure 1 : SIM card slot for Kona Micro



Figure 2 : Orientation of SIM Card while inserting into slot

Inserting SIM Card for **KONA Macro**

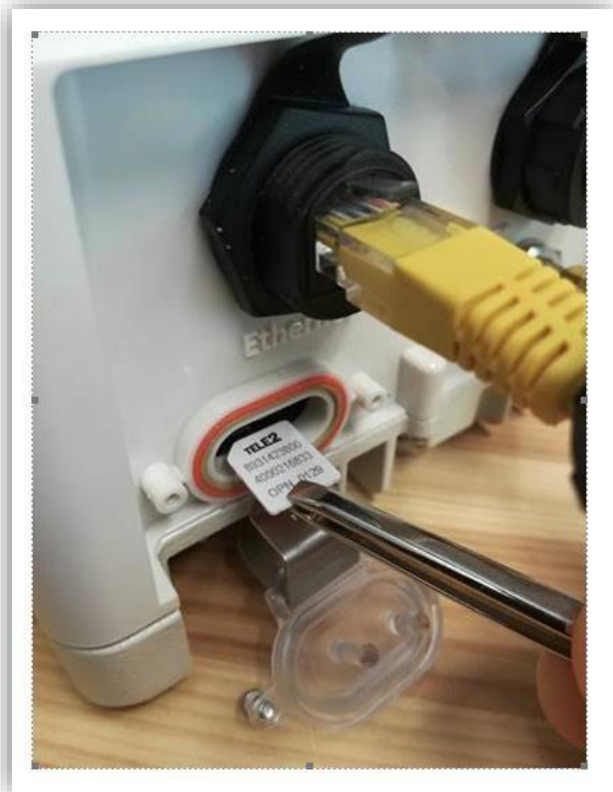


Figure 3: Correct orientation for inserting SIM Card

Note* Newer Kona Macro gateways that use the Nano SIM tray will have the SIM holder on the bottom side of the opening shown in Figure 3 and will need to have the SIM inserted conductor side up.

Set APN for Cellular Interface

- » Log into either TEKTELIC Network Server (NA or EU) or OAM Server
- » Navigate to your gateway and click on WIRELESS MODEM tab and click on + sign to add APN:

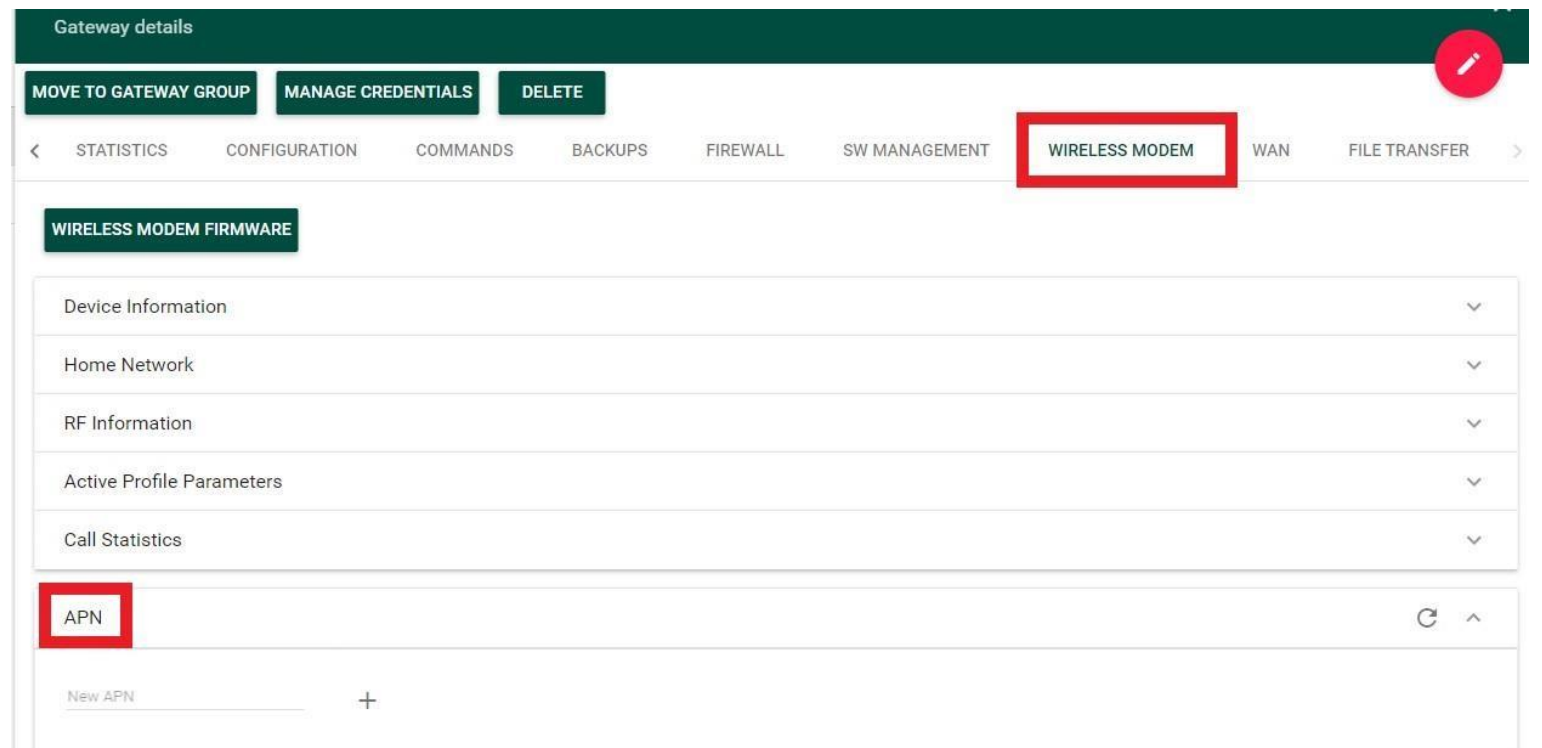
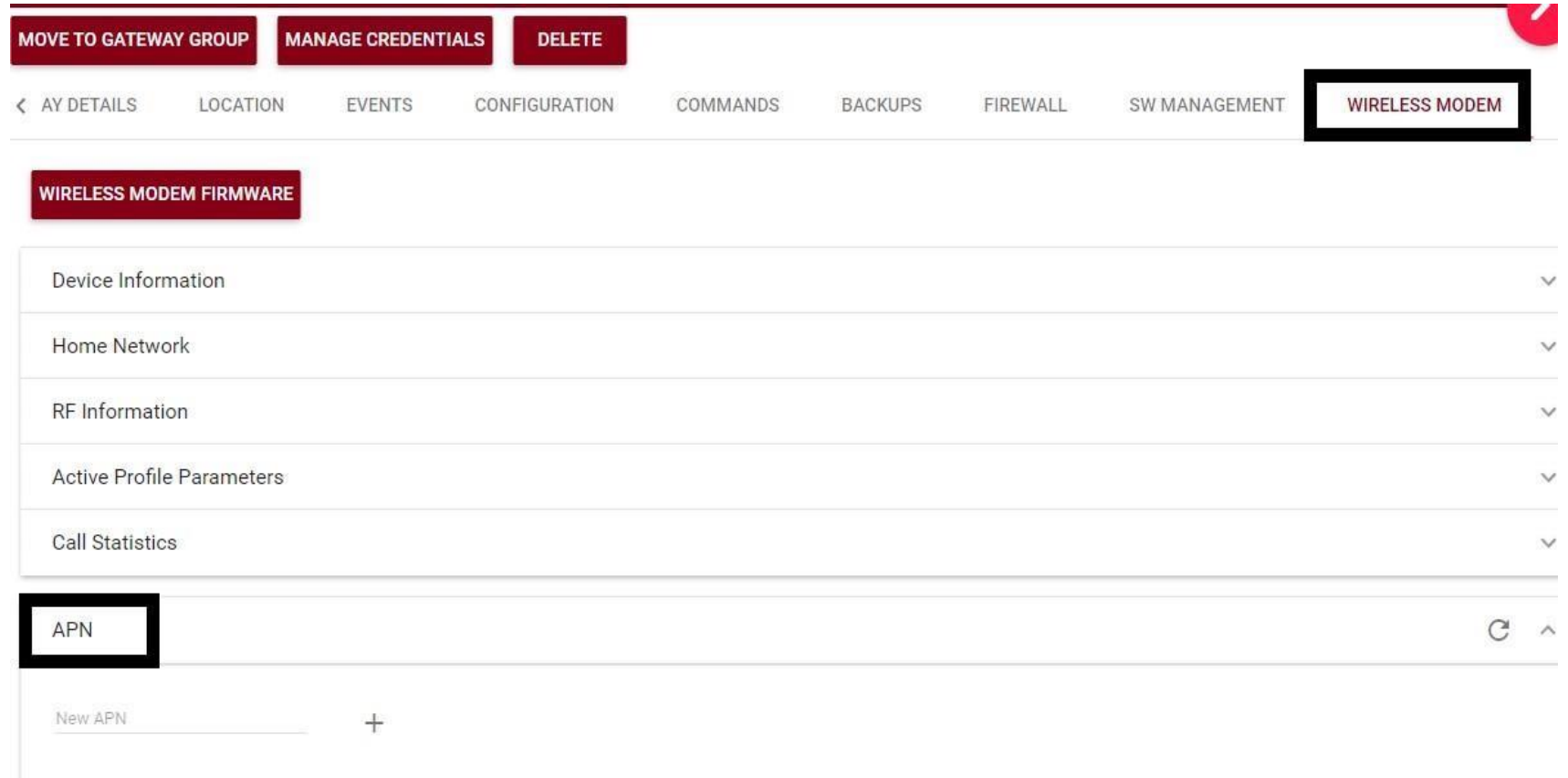


Figure 5: Wireless Modem tab on Network Server

Cellular Interace Cont.

Figure 6: Wireless Modem tab on OAM Server



Power Cycle

- » After adding correct APN, power cycle the gateway.
- » **Note:** For Kona Micro gateway, you will also be required to remove battery while power cycling the gateway.

Best-In-Class, Carrier Grade &
Most Cost Effective
Portfolio of Gateways, Network Server,
Sensors & Applications